




INSCAF TECH

COMPANY PROFILE



INSCAF TECH IS A 100% OMANI OWNED ISO CERTIFIED EPC CONTRACTOR IN COMPLIANCE TO
ICV RULES AND REGULATIONS IN THE SULTANATE OF OMAN.



**INSCAF TECH
IS YOUR MULTI
SPECIALITY
PARTNER FOR
UNDERTAKING
COMPLEX MULTI-
DIMENSIONAL
PROJECTS**

INSCAF TECH is 100% Omani owned ICV ISO certified company, capable of offering multi engineering and construction solutions by adopting the latest and high level technical practices available in the market.

Our Services cover wide range of activities related to engineering, procurement and construction in multiple sectors (i.e. Oil & Gas, Power plant, petrochemical, port, overall industrial maintenance/services etc).

TABLE OF CONTENTS

01. About Us

02. Our Mission & Vision

03. Our Values

04. The Company's Credibility

05. ICV Initiatives

08. Overview Of Operations

09. Our Major Projects

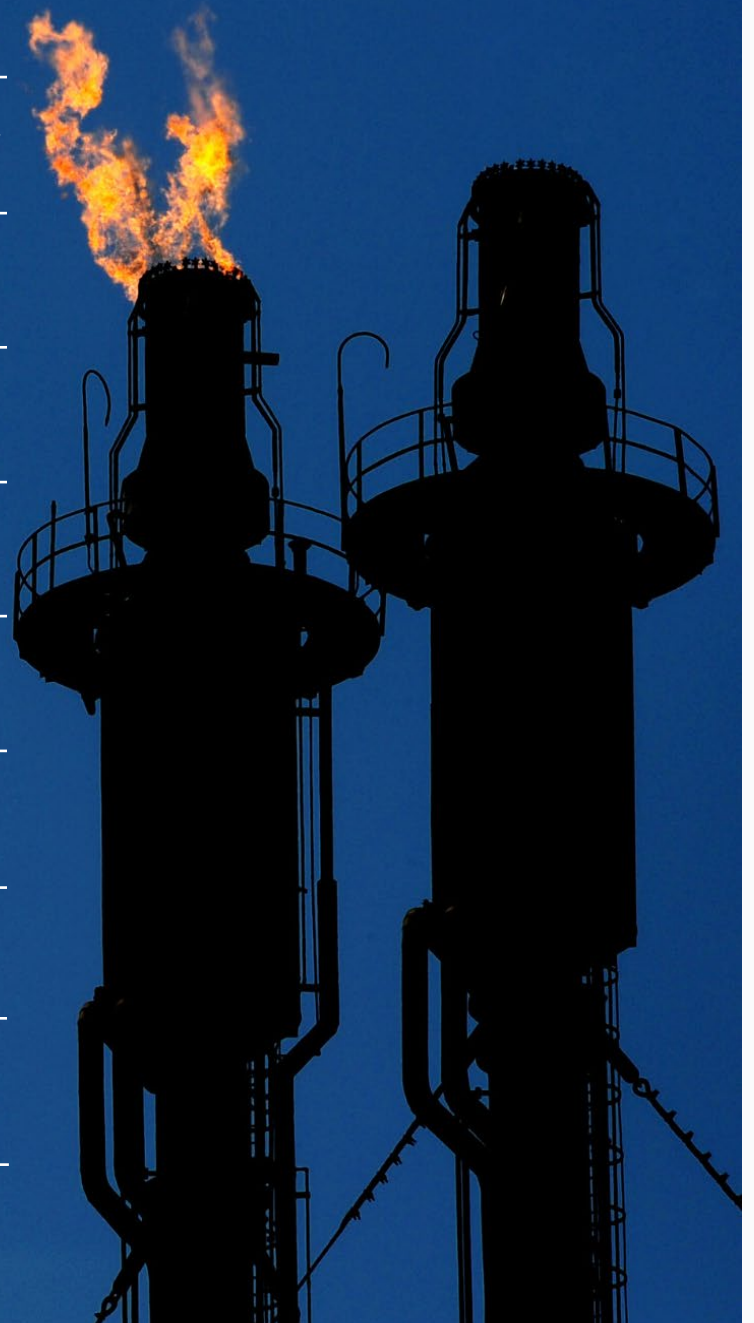
11. Our Capabilities

25. QHSE Policy

27. Certifications

33. Gallery

53. Management Statement



ABOUT US

Established in 2022, INSCAF TECH is backed up by multinational professionals and highly skilled competent workforce in each sector related to our services.

With our experiences and expertise, INSCAF TECH is now emerging as a leader in our field of operations. Our success has been built on customer satisfaction and achieving the agreed milestones effectively and efficiently with high levels of quality and safety. This satisfaction is based on our performance in the execution of contracts and the reliability of our designs and products. Our legacy of project success, helps lower operational and financial risks to our valued clients.

Our exceptional growth is based on the unremitting and persistent upgradation of our techniques and personnel through updated technologies, fastidious training methods and applications in our field.



INSCAF TECH has established an excellent track record from its inception and is capable of delivering comprehensive access solutions to meet the stringent demands of the construction industry, oil & gas industry, petrochemical industry, power plants, steel, aluminium and other related industries. With resources spanning all across the countries of our operations we have facilities, fabrication yards, storage units and more to help ensure all our clients operations are covered.

**IMPROVE COST
CERTAINTY**



**INCREASES
ASSET
AVAILABILITY**



**FREE UP CORE
RESOURCES**



**REDUCE
COMPLEXITY**





MISSION STATEMENT

Our Mission is to deliver cost effective and high quality services and projects to our clients by adopting the latest technical solutions/ practices available in the industry.

VISION STATEMENT

Our Vision is to be a top quartile service provider recognized in the region leading the market with the latest industrial solutions adding value we create to Oman and our people.

OUR MISSION & VISION

OUR VALUES

INSCAF TECH adopted high level quality system in executing project and services in compliance with ISO standard requirement and the best industrial practices. We aim and work to meet and exceed the customer's expectations for delivering high quality, cost effective services by utilizing only the best materials and practices.



QUALITY

INSCAF TECH promote a positive safety culture and adopt high standards in our operations to be a premium service provider in Health & Safety adhering and adopting country rules/regulations and complying with the client HSE requirement to achieve safe execution of the project/services.



**HEALTH &
SAFETY**

The management of INSCAF TECH believes in the need of business to be good corporate citizens. We believe in protecting the interests of all stakeholders, such as employees, customers, suppliers and the communities in which businesses operate.



CSR



ICV

INSCAF TECH follow the ICV regulations set forth in all our projects by the government as well as our valued clients.

THE COMPANY'S CREDIBILITY

- INSCAF TECH is a 100 percentage Omani owned, ICV local company undertaking projects in multiple countries.
- INSCAF TECH is servicing the clients in the market with the highest quality and HSE oriented services in the field of Civil, Mechanical, E&I, Scaffolding, Surface Protection, Fireproofing, Refractory and Insulation along with every industry relevant services.
- INSCAF TECH is able to deliver the services within the required duration leveraging our high investment capacity and high emphasis and assurance of quality delivery.
- INSCAF TECH is committed towards maintaining the highest safety standards at all times, continuously investing in new technologies to meet the market demands and its challenges using our highly experienced and qualified Project Management team along with a skilled workforce.

ICV

INITIATIVES

ICV INITIATIVES

INSCAF TECH is committed to Omanisation, which involves increasing the number of Omani citizens in the workforce. INSCAF TECH cooperates with the government's efforts to create job opportunities for its citizens, as well as to build a more sustainable and self-sufficient economy.

TRAINING AND DEVELOPMENT

We are committed to training and developing Omani citizens to pursue a career in oil and gas industry. INSCAF TECH offers training and development opportunities to Omani citizens, as well as actively recruits Omanis to fill vacancies within the company. This has not only helped to increase the number of Omani citizens in the workforce, but has also resulted in the development of a highly skilled and competent local workforce.

CONTRIBUTION TO OMAN ECONOMY

We make a dedicated effort to boost the local economy of The Sultanate Of Oman. ICV initiative is aimed at promoting the use of locally sourced goods and services in the oil and gas sector, thereby supporting the development of the Omani economy.





ASPIRING FOR
GREATNESS IN
EVERYTHING WE
DO.

OVERVIEW OF OPERATIONS

INSCAF TECH is a 100% Omani owned, ICV local company capable of offering complete and comprehensive solutions in the field of Civil, Mechanical, E & I, Preservation and commissioning, Specialized access solution, surface protection, insulation, fireproofing, refractory, project management and warehousing facilities.

Starting from design and detailed engineering to procurement, fabrication, construction and commissioning of bulk and process plants. And providing total support services to projects on various engineering works with Scaffolding Specialization and Health, Safety and Environment Consultation as the core businesses covering all ranges of support services to industries such as Refinery, Petrochemical Plant, Power Plants, Aluminum and Steel plants segments.

- ✔ SETTING HIGH INDUSTRY STANDARDS
- ✔ REPUTATION FOR RELIABILITY & QUALITY
- ✔ HIGHLY TRAINED & COMPETENT PROFESSIONALS
- ✔ DIVERSE PORTFOLIO OF CLIENTS

OUR MAJOR PRO

INSCAF TECH has a proven track record of successfully completing projects on time and within the client's budget. Our employees are highly qualified and experienced to complete a project according to the clients specifications.

1. DUQM REFINERY (OQ8)

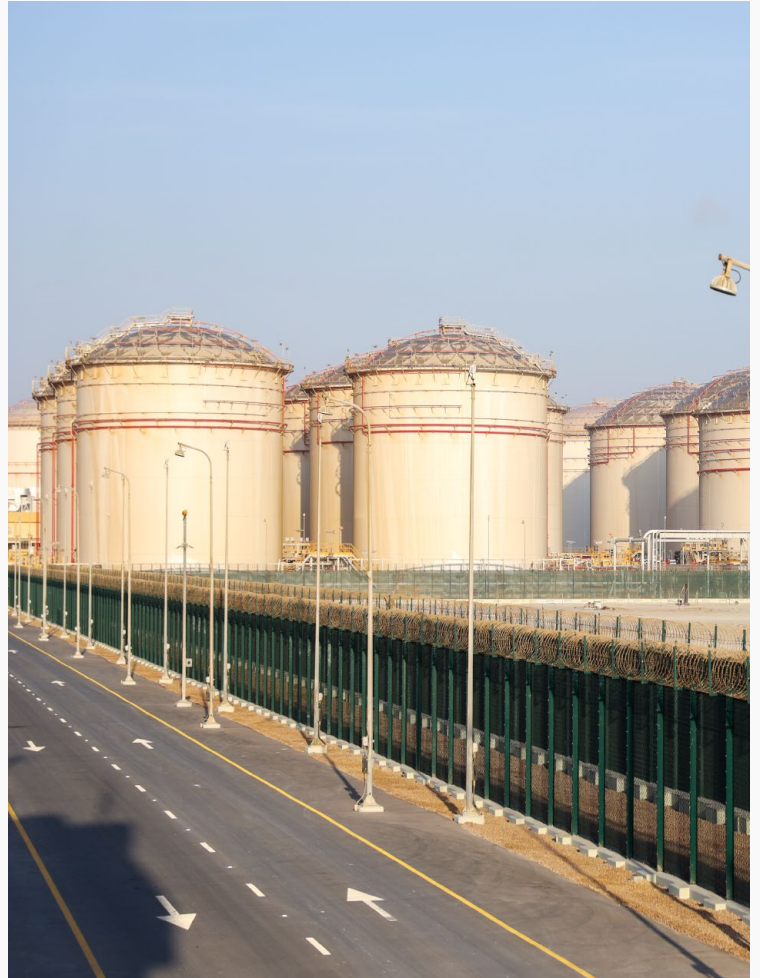
EPC 3 Package 3 Offsite Facilities
(Sub Package A, B & C)

INSCAF TECH as an EPC company was the main sub-contractor support for Saipem in the field of Civil, Mechanical, E&I, MEP, Scaffolding, Painting & Insulation, Fireproofing along with Preservation and Commissioning activities.

2. DUQM REFINERY (OQ8)

Duqm Refinery Project, EPC 1 Package

Support of subcontractor for Tecnicas Reunidas Daewoo LLC (TRD) in services related to Cooling Tower, Pipe Racks, Vessels, Reformers and Heaters.





OUR CAPABILITIES

CIVIL

Our qualified Civil department team focus on core values of the project to meet the client/ stake holder requirements. They organize and supervise the workforce, plant, and materials, ensuring that the project is completed according to the design, plan, budget and schedule.

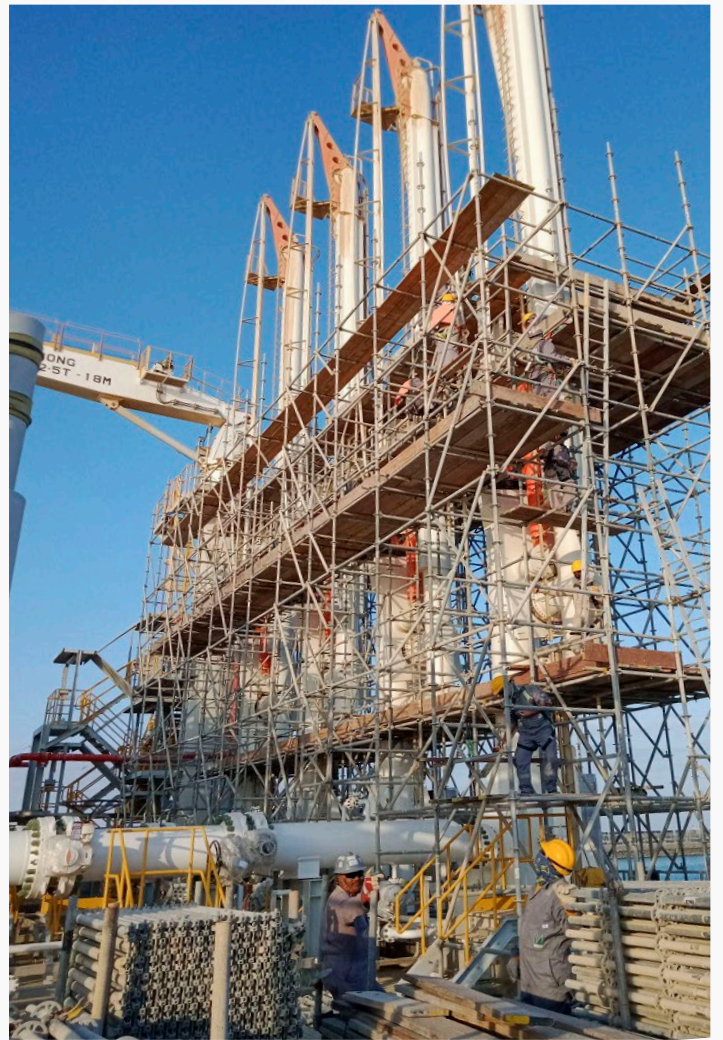
MECHANICAL

Our qualified Mechanical department is responsible for designing the equipment and machinery that are used by technicians and engineers for their day to day activities. Our team analyzes any operational difficulties faced by the technicians and create new equipment or modify the existing ones.

E&I

Our qualified E&I department is responsible for the design and implementation of electrical systems. They work on manufacturing processes according to global engineering codes & standards while also ensuring that installations align with customer needs and expectations.





ACCESS SOLUTIONS & SCAFFOLDING

INSCAF TECH is capable of delivering innovative structural access and repair solutions. With a huge inventory of scaffolding equipment and state-of-the-art materials we provide a rapid response to our customers' needs, upto any height.

INSCAF TECH's Access Solutions include:

- Tube and Fittings Scaffolding
- Insulated Scaffolding
- System Scaffold
- Mobile Tower Scaffold
- Suspended Scaffold
- Staircase
- Formwork Scaffold
- Heavy Load Bearing Scaffolds with design and calculations
- Designs with Load Bearing Calculations for Cuplok
- Type, Ring Lock, Frame and Tube & Fittings.
- Scaffold Erection
- Scaffolding Inspection
- Scaffolding Dismantling
- Scaffolding Maintenance Services
- Rental of Scaffolds
- On-site Project and Inventory Management

SURFACE PROTECTION & COATING APPLICATION

- Tank Cleaning and Degreasing Services.
- Specialized in Storage Tanks.
- Tank Corrosion Removal and Solutions.
- Anti-corrosion Treatment.
- Blasting and painting for oil and gas refineries, power plants and petrochemical facilities.
- GRE lining to tank bottom - Shell
- Epoxy floor coating & flow screeding services.
- Heat resistant and coating services.

FIREPROOFING

INSCAF TECH's solutions for protection against fire, explosion and blast in the industry are built on years of experience from projects around the world.

We cater to

- Cementitious fireproofing
- Intumescent fireproofing



REFRACTORY

INSCAF TECH's Refractory division headed by experienced individuals (API Certified) who has experience in catering refractory scopes in metallurgy and non-metallurgy industries focusing on:

- Fired Heaters
- Hydrogen Reformers
- Ammonia Primary and Secondary Reformers
- Cracking Furnaces
- Incinerators
- Utility Boilers
- Catalytic Cracking Units
- Coke Calciner
- Sulfur Furnaces
- Air Heaters
- Stack
- Ducting
- Furnace
- Kilns
- Reactors

ALL KINDS OF INSULATION WORKS

INSCAF TECH offers high quality Insulation services for the industry ranging from

- Thermal Insulation
- Cryogenic insulation
- Cold Insulation
- Acoustic Insulation
- Refractory





PROJECT MANAGEMENT

INSCAF TECH makes sure that our competences are continuously updated and all our employees are rooted with knowledge in safety related trainings for the work and adapts in receiving ongoing training.

In INSCAF TECH safety, quality and diligence are all extremely integral and form a vital part of our DNA- and this mindset is very key to accomplish all the milestones throughout the organization. The INSCAF TECH team achieves project goals and milestones by approaching and implementing project management principles with dedicated qualified PMI certified staffs to fulfill client requirements. Our large and versatile resource pool consists of dedicated people with the competences you need in order to get the job done.

PRESERVATION & COMMISSIONING

INSCAF TECH is capable of extending and maintaining clients assets in terms of preservations for piping, rotary equipment, storage facilities & static equipment's along with all required commissioning supports.

We cater to:

- Operational Tightness Testing
- Loading of Desiccants and Catalyst
- Refractory Dry Out
- Run in Rotary Equipment
- Instrument and Electrical Function Testing
- Function Testing of Safety Systems
- Instrumentation Verification
- Piping and Vessels Start up
- Steam blowing
- Flushing, Chemical and Mechanical Cleaning
- Cleaning by Air blowing
- Performance Analysis and Checks
- Pigging
- Hydrostatic Pretesting
- Nitrogen Drying
- Electrical Energizing
- Torquing
- Transformer Oil Filtration





Scaffold Warehouse



Scaffold Warehouse



Tool Box Talk

INSPECTION SERVICES

- Inspection of Scaffold
- Inspection of Coating
- Inspection of Insulation Quality
- Liquid Penetration
- Ultrasonic Testing
- Visual Testing
- Radiography Testing
- Magnetic Particle Testing
- Penetrant Testing

TEMPORARY WAREHOUSE FACILITIES

INSCAF TECH offers specialized customized temporary warehousing facility made up of engineering designed scaffolding structures with a span of more than 80 meter length and 12m height withstanding 120km/hr speed and harsh climatic conditions.

MANPOWER & SKILLED TRADE

INSCAF TECH is your flexible supplier of reliable and dedicated manpower.

- Worldwide: Extremely Qualified and cost-efficient manpower.
- We ensure efficient mobilization.
- Highly trained and experienced personnel.
- Our service is responsive and flexible.
- We provide the exact personnel that you need, where and when you need them.

ENGINEERING DESIGN

MECHANICAL

Pressure vessels, Tank Design & FEA

Mechanical Design conforming to ASME Section VIII Divisions 1 & 2 or other standards and Detail Engineering for:

- Horizontal, Vertical, Spherical vessels
- Heat Exchangers
- Atmospheric Storage Tanks
- Floating Roof Tanks
- LPG Tanks & Bullets
- Preparation of technical specifications, design calculations, engineering data sheets.
- Preparation of fabrication drawings and BOQ
- Technical bid evaluation, technical recommendations, vendor drawing approvals.
- Finite Element Analysis (FEA) for Tank Nozzles, Supports Cleats etc.
- CFD analysis for HVAC systems, Wind Tunnels etc.



PROCESS

- Creation of intelligent P&IDs in Smart Plant P&ID / Aveva P&ID modules
- Customization of legend, reports
- Development of P&ID's based on FEED
- Preparation of P&ID's for utilities
- Sizing calculations
- Hydraulic calculations and Surge Analysis
- Preparation of line list, equipment list, valve list, etc



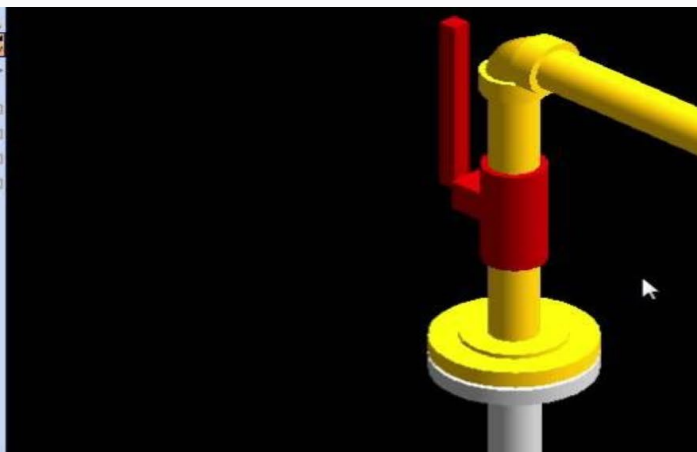
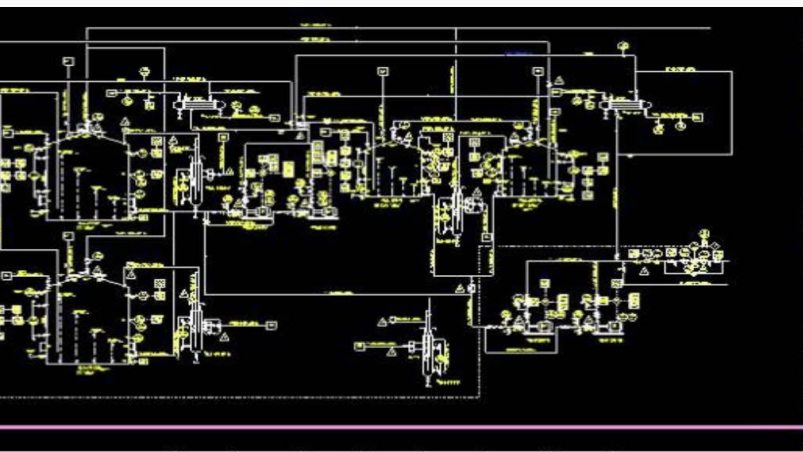
PIPING

Piping Design and Detailed Engineering

- Preparation of Design basis
- Job Specification
- Development of Plot Plan
- Development of Equipment Layout
- Piping studies and Piping Layout
- Piping Isometric drawings
- Piping Material take off
- Material requisition for piping and specialty items.
- Review & approval of vendor drawings

Piping & Pipeline Stress Analysis and Pipe Supports

- Preparation of stress critical line list
- Analysis of Piping Systems as per ASME B31.1 and 31.3, 31.4 & 31.8
- Data Sheets for Expansion Joints
- Modification of existing Pipe Routing as per stress analysis report
- Pipe Support Design
- Support engineering including special supports preparation
- Location selection & detailed drawings

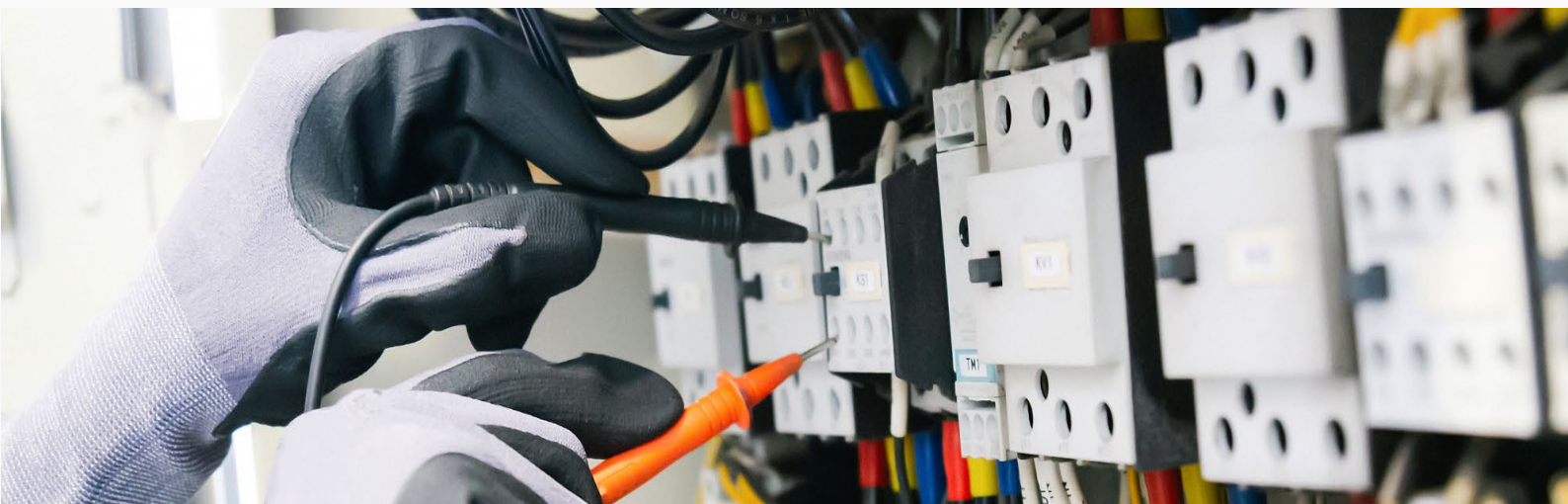




CIVIL & STRUCTURAL

INSCAF TECH provides Structural Design, Detail, and Analysis services especially in the fields of Oil and Gas and Power Sector. With our extensive resource base, usage of up-to-date technology and tools, and on-time delivery records, we continue to have a long list of reputed clients in these fields.

- Design calculations
- Bar bending schedules
- Reinforced concrete framed structures
- Pile and conventional foundations
- Equipment and machinery foundations
- Steel framed buildings and superstructures
- Pipe and cable rack structures, conveyor galleries,
- Trestles, stack supporting structures and platforms
- Turbine houses, workshop buildings, etc.



INSTRUMENTATION

INSCAF TECH performs Design and Detail Engineering for process plants and provide field assistance. Our services include:

- Instrument Specifications and Data Sheet
- Enquiry Documents & Evaluation Reports
- Preparation of I/O Details
- Scale Range and Alarm Limits
- Interlocks and Logical Diagrams
- Instrument Hook up drawings
- Instrument Loop drawings
- J.B, T.B Detailed drawing
- Instrument Air Distribution
- Cable Tray routing
- Cable schedule
- Instrument Layout drawings
- Field Assistance



ELECTRICAL

INSCAF TECH provides concept designs, construction coordination, detailed drawings, arranging for statutory approval, pre-commissioning checks, and commissioning assistance and consultation. Our other services include:

- Load Flow Studies
- HV / LV Switch gear , MCC
- AC/DC UPS, Power / distribution transformers
- Supply changeover schemes
- Switchyard, transformer layouts
- Lighting Layouts
- Power and control cable schedules
- SCADA I/O List , cable trays, earthing
- Review of vendor drawings & issue of approval for manufacturing
- Field Visit

QHSE POLICY



HEALTH AND SAFETY POLICY

Our Health and Safety Policy help us preserve the best possible work conditions for our employees. Every employee has a right to feel safe at work. Our company is committed to following legal standards and create a hazard-free workplace.



ENVIRONMENT POLICY

INSCAF TECH is fully committed to protect the Environment on each of its operations by setting Environmental objectives that will continually improve the manner in which we approach our various projects/services.



QUALITY CONTROL

INSCAF TECH is committed to delivering quality construction work with promised amenities, which meets and exceeds the needs & expectation of our clients. We promise our valued client's commitment to excellence in each activity, by each employee in the organization, by adopting innovative and best in class engineering and management practices.

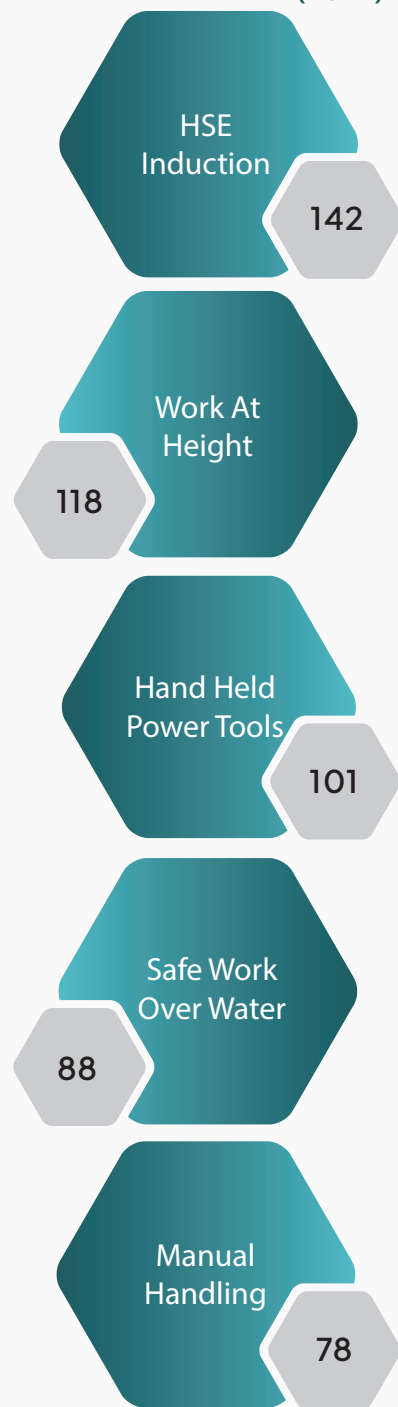
- ✓ QUALITY
- ✓ HEALTH
- ✓ SAFETY
- ✓ ENVIRONMENT



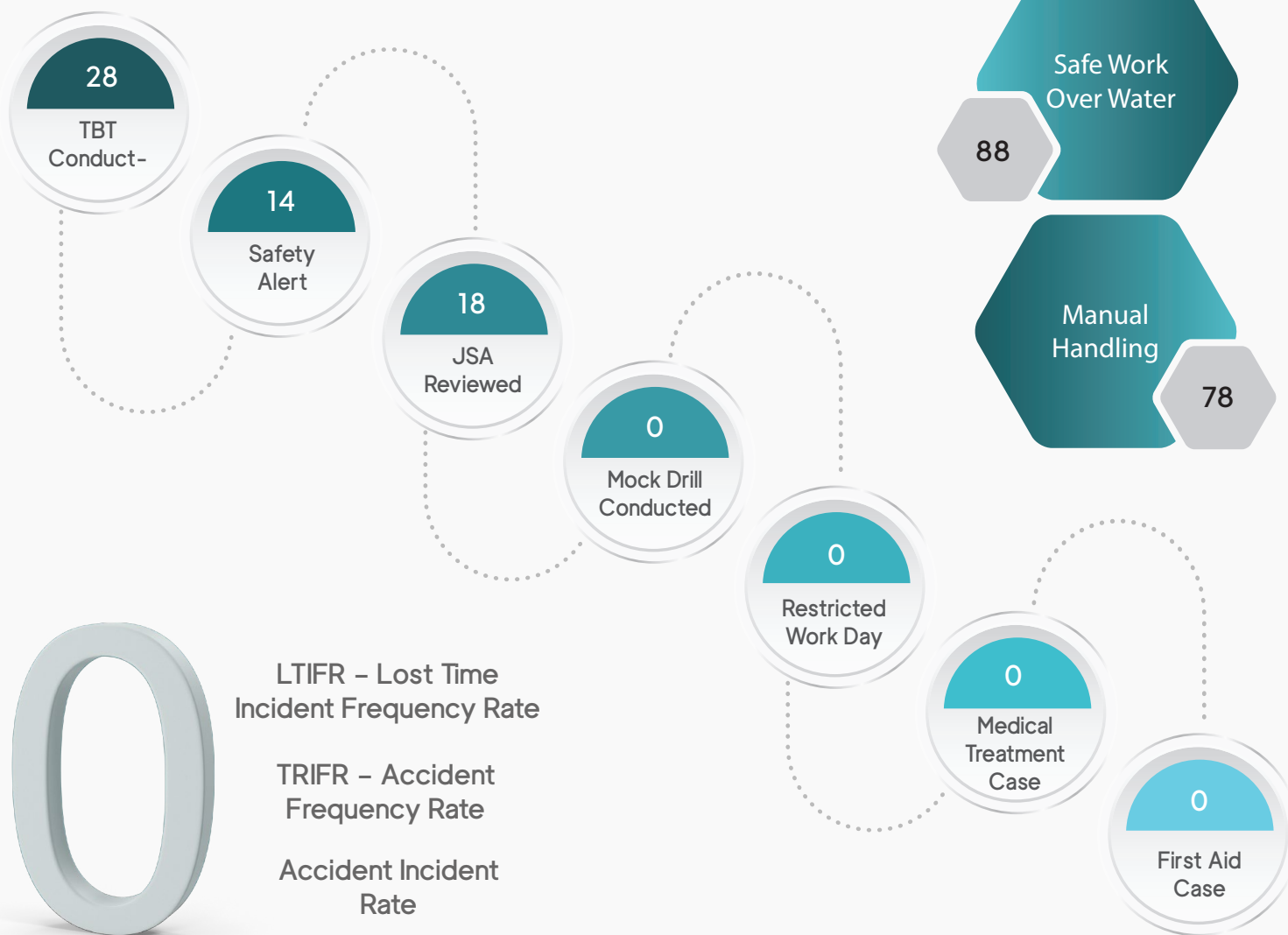
Main indicators

Cumulative Man-hours	2022
97960	
Cumulative Man-hours Without LTI	2022
310180	
Cumulative Training Hours	2022
3808	

Major Training Sessions (2022)



Our Performance



CERTIFICATIONS

QUALITY CERTIFICATION



Certificate of Registration

*This is to certify that
The Quality Management System of*

INSCAFTECH, ASALA OF EAST GULF SPC

P.O.Box 2659, Postal Code- 111. Sultanate of Oman

*has been assessed and found to be in compliance
with the requirements of the standard*

ISO 9001:2015

for the following scope :

**Engineering, Procurement, Construction and Maintenance in the Field of Civil,
Mechanical, Electrical & Instrumentation, Preservation and Commissioning,
Specialized Access Solution, Surface Protection, Insulation, Fireproofing,
Refractory, Warehouse Facilities and Facilities Management.**

CERTIFICATE No. : 24ZCAQ0992Q

ISSUED DATE : 19/02/2024
EXPIRY DATE : 18/02/2027

1ST SURVEILLANCE : 18/02/2025
2ND SURVEILLANCE : 18/02/2026



Authorised Signatory

INTERNATIONAL QUALITY CERTIFICATION SERVICES UK LTD
272, Bath Street, Glasgow, G2 4JR, U.K.

This Certificate is intellectual Property of IQCS and can be maintained through surveillance and renewal audits.
Certificate should be returned to IQCS in case of non compliance of certification procedure.
Authenticity of this certificate can be verified at www.ukacert.co.uk / www.iqcsert.co.uk
The Registration is not a Product Quality Certificate.



Certificate of Registration

This is to certify that
The Environment Management System of
INSCAFTECH, ASALA OF EAST GULF SPC

P.O.Box 2659, Postal Code- 111. Sultanate of Oman

has been assessed and found to be in compliance
with the requirements of the standard

ISO 14001:2015

for the following scope :

**Engineering, Procurement, Construction and Maintenance in the Field of Civil,
 Mechanical, Electrical & Instrumentation, Preservation and Commissioning,
 Specialized Access Solution, Surface Protection, Insulation, Fireproofing,
 Refractory, Warehouse Facilities and Facilities Management.**

CERTIFICATE No. : 24ZCAQ0993E

ISSUED DATE : 19/02/2024
 EXPIRY DATE : 18/02/2027

1ST SURVEILLANCE : 18/02/2025
 2ND SURVEILLANCE : 18/02/2026



Authorised Signatory

INTERNATIONAL QUALITY CERTIFICATION SERVICES UK LTD
 272, Bath Street, Glasgow, G2 4JR, U.K.

This Certificate is intellectual Property of IQCS and can be maintained through surveillance and renewal audits.
 Certificate should be returned to IQCS in case of non compliance of certification procedure.
 Authenticity of this certificate can be verified at www.ukacert.co.uk / www.iqscert.co.uk
 The Registration is not a Product Quality Certificate.



Certificate of Registration

*This is to certify that
Occupational Health & Safety Management System of*

INSCAFTECH, ASALA OF EAST GULF SPC

P.O.Box 2659, Postal Code- 111. Sultanate of Oman

*has been assessed and found to be in compliance
with the requirements of the standard*

ISO 45001:2018

for the following scope :

**Engineering, Procurement, Construction and Maintenance in the Field of Civil,
Mechanical, Electrical & Instrumentation, Preservation and Commissioning,
Specialized Access Solution, Surface Protection, Insulation, Fireproofing,
Refractory, Warehouse Facilities and Facilities Management.**

CERTIFICATE No. : 24ZCAQ09940

**ISSUED DATE : 19/02/2024
EXPIRY DATE : 18/02/2027**

**1ST SURVEILLANCE : 18/02/2025
2ND SURVEILLANCE : 18/02/2026**



Authorised Signatory

INTERNATIONAL QUALITY CERTIFICATION SERVICES UK LTD
272, Bath Street, Glasgow, G2 4JR, U.K.

This Certificate is intellectual Property of IQCS and can be maintained through surveillance and renewal audits.
Certificate should be returned to IQCS in case of non compliance of certification procedure.
Authenticity of this certificate can be verified at www.ukacert.co.uk / www.iqcsert.co.uk
The Registration is not a Product Quality Certificate.



CERTIFICATE OF APPROVAL

Awarded to

ASALA OF EAST GULF SPC

As an Approved Supplier to the Oman Oil & Gas Industry's Joint Supplier Registration System (JSRS)

Country of Origin : Oman JSRS Supplier Code : OM114702

Registration Date : 27-08-2023 Valid till : 29-08-2026

Special Status : NIL National SME Classification : SME-Small



وزارة الطاقة والمعادن
Ministry of Energy and Minerals



This Certificate is issued for supplying Products & Services to Oil & Gas and other related Industries in Oman and is not valid to acquire permits from other Governmental or Non-Governmental agencies.

Certificate No. : JSRSOM3679222354001 / Issued On : 27-09-2023

dun & bradstreet

This is to certify that

ASALA OF EAST GULF

18th November Street,
P.O Box No 2659,
Muscat, 111,
Oman

is now part of the Dun and Bradstreet Global Database
and has been assigned the

D&B D-U-N-S® Number:
85-040-2042



Authorized Signatory
Dun & Bradstreet South Asia Middle East Limited

Sep 14, 2023
www.dnbsame.com

REMARKABLE
WORK
TRANSCENDING
THE NEEDS &
EXPECTATIONS
OF OUR CLIENTS



GALLERY



Road Work for Oil and Gas, Power Plant, Petrochemical Plant



Survey Activities



Floor Concrete Work



Security Razor Coil Installation For ROP 1min, 10min and IAPS Fence



Pipeline Welding



Flange Facing For GRE Pipes



Pipeline Maintenance Activities



Installation Of Conveyor Structure



Torqing Activities



Welding Activities On Structures



Cable Glazing & Termination Works



False Ceiling, Furniture, Floor Carpet Installation & Glass Window Installation



Fire Suppression System Accessories Installation



MCC Panel Installation & Cables Termination Work



Floor Box Fixing



Lighting & Small Power Panel Cables Termination



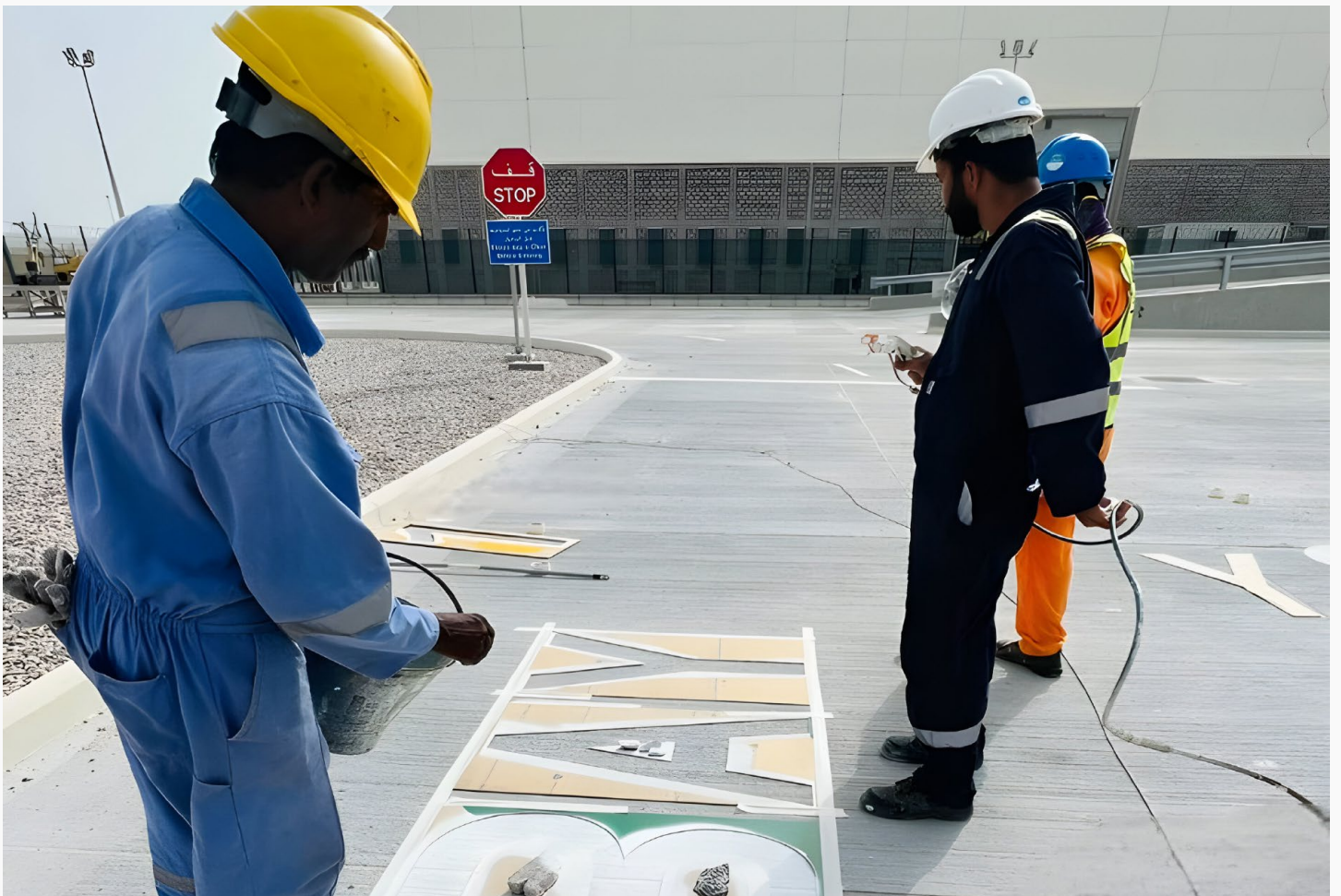
HVAC Control Panel Termination



Commissioning Activities



Preservation Activities



Stencil Work On Asphalt And Concrete Road



Construction Of Asphalt And Concrete Road Including Road Marking, Safety Sign Installation



ROP 1 min, 10 min, ISPS Fence Installation



Installation Of Hesco-Rapid Deployment Barriers



Leveling, Grading & Compaction Work For Oil And Gas, Power Plant And Petrochemical Plant



Shuttering and Steel Fixing



Gravel Laying Work In Duqm Refinery



Spray Painting For Pipelines



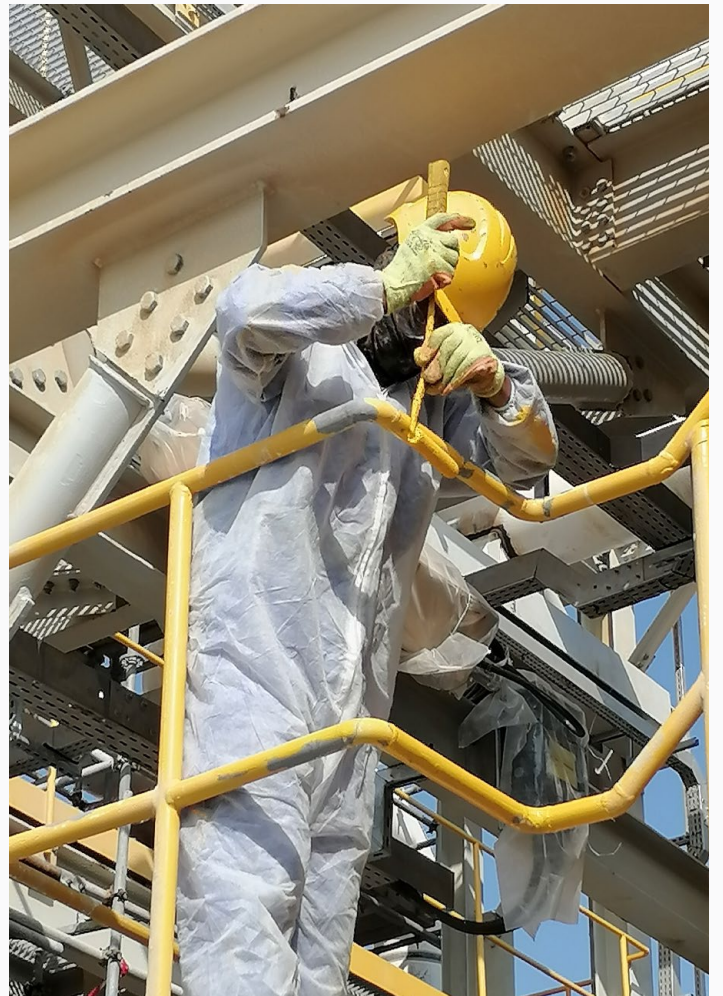
Fireproofing Application On MLA's



Pipeline Sandblasting Work



Fireproofing Job(Intumescent Coating)



Coating Application



Thermal Insulation For Pressure Vessels



PP Insulation On Flare Knock Out Drum



Insulation For Pipeline And Equipments



Insulation For Pipeline And Equipments



Scaffolding Installation



Scaffolding Inspection



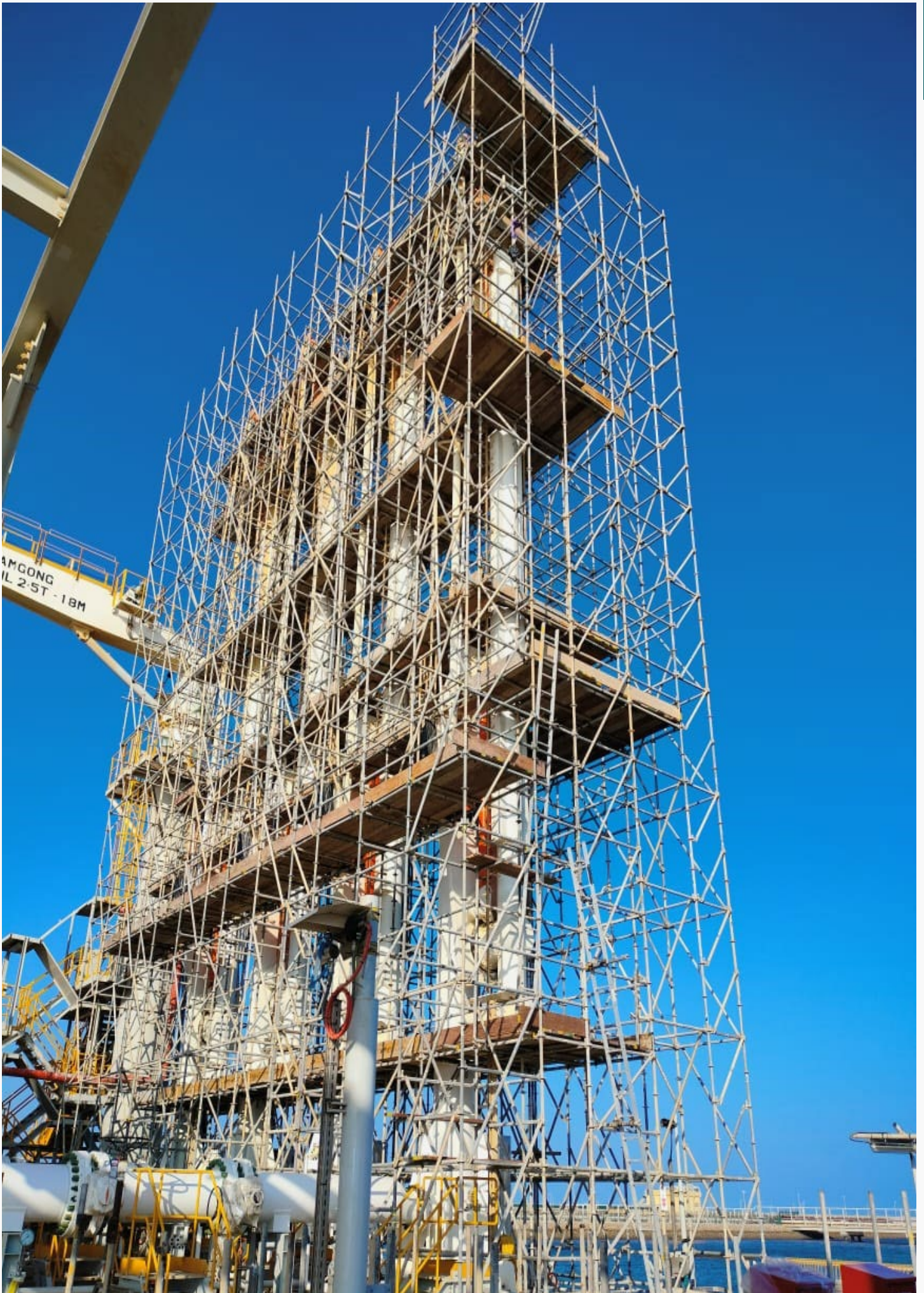
Scaffolding Installation



Hanging Scaffold



Fibre Glass Scaffold



Scaffolding Installation



Confined Space Training



Soil Inspection Work



HSE TBT



Inspection For Hot Oil Heaters

MANAGEMENT STATEMENT

INSCAF TECH WILL COMPLY FULLY WITH THE LAWS OF THE COUNTRY FOR IT'S OPERATIONS, AND COMMIT TO PERFORM ITS ACTIVITIES WITH THE INTENTION TO:

- Protect health and safety of all employees and others who are associated in it's activities.
- Protect the environment, prevent pollution and ensure a safe working environment at all working areas.
- Ensure that HSE is a line responsibility and all employees are fully aware of their roles and comply with the same.
- Manage health and safety risk as far as reasonably practicable and protect the environment.
- Empower employees to start work only when conditions are safe and to stop work when conditions are unsafe.
- Provide training and resources for employees to maintain the HSE system.
- Ensure safe operation of all equipment, vehicles and plants.
- Implement this policy through company action plans, corrective actions and continuous monitoring, supported by proper training.



INSCAF TECH

OMAN

P.B: 2659, P.C 111
AZAIBA, MUSCAT
TEL: +968 91956911



info@inscaphotech.com



www.inscaphotech.com



ENGINEERING, PROCUREMENT & CONSTRUCTION SERVICE PROVIDER IN:

- MECHANICAL
- CIVIL
- REFRACTORY
- FIREPROOFING
- INSULATION
- WAREHOUSE
- ELECTRICAL & INSTRUMENTATION
- COATINGS & SURFACE PROTECTION
- PRESERVATION & COMMISSIONING
- SPECIALISED ACCESS SOLUTIONS
- SPECIALISED SUPPLY SERVICES & TRADING
- SKILLED PERSONNEL, EQUIPMENT & MACHINERY SUPPLY